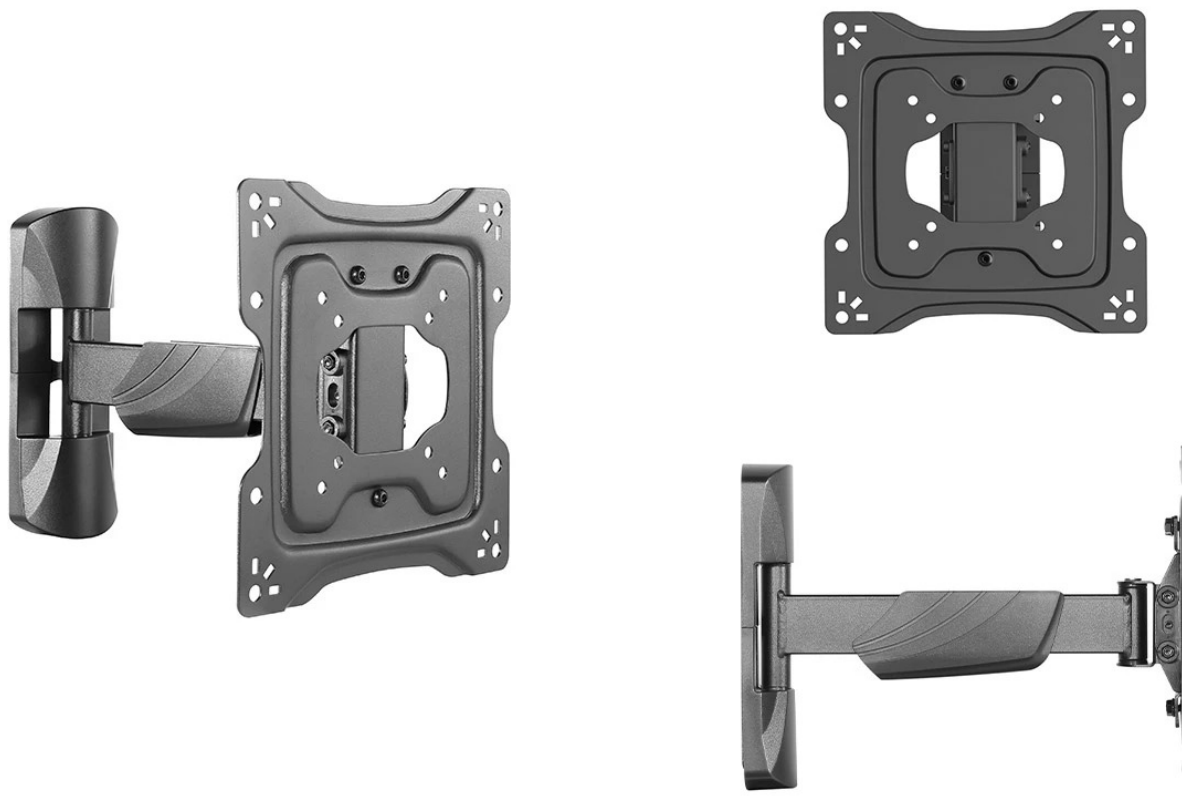


SUPPORTS / TV STANDS / WALL

MOV-122PR

ADJUSTABLE TV WALL MOUNT



- ✓ They are horizontally adjustable and vertically tiltable
- ✓ Spirit level
- ✓ Installation template, Fischer plugs, screws and mounting accessories
- ✓ Firm and secure hold
- ✓ Quick and easy installation



+ Info:
<https://fonestar.com/MOV-122PR>

ESPECIALLY RECOMMENDED IN:



Retail



Hotels



Offices



All sectors

DESCRIPTION

Swivel TV Mount MOV-122PR: Versatility and Durability for Your Home

The MOV-122PR is a swivel wall mount for TVs ranging from 13” to 55”, designed to provide flexibility and durability for screens of various sizes. Its black finish and lightweight 1.7 kg structure make it a functional and discreet mount, ideal for any decorative style.

Precise Adjustment and Easy Installation

Wide Range of Motion: With up to 180° horizontal swivel and vertical tilt from -15° to +5°, the MOV-122PR mount allows you to adjust the screen to fit your space. Additionally, it offers a ±3° horizontal correction, ensuring optimal viewing.

Easy and Secure Installation: Includes an installation template, bubble level, cable holders, screws, and Fischer wall plugs to ensure a quick and hassle-free setup.

VESA Compatibility: Compatible with the most common VESA sizes (75x75, 100x100, 100x200, 200x100, and 200x200), supporting TVs up to 35 kg.

Why Choose the MOV-122PR Mount?

This mount is the ideal choice for end users looking for a durable, versatile, and adaptable solution for their TVs. Its swivel design and robust construction make it perfect for ensuring the stability and safety of audiovisual equipment in any home.

TECHNICAL CHARACTERISTICS

FEATURES	Swiveling TV stand
SCREEN	13 to 55" (33 to 139.7 cm)
VESA	75x75, 100x100, 100x200, 200x100, 200x200
MAXIMUM BORNE WEIGHT	35 kg
ADJUSTMENTS	Horizontally adjustable 180° Vertically tiltable -15°/+5° Horizontal adjustment ±3°
COLOUR	Black



+ Info:
<https://fonestar.com/MOV-122PR>

DIMENSIONS	Distance to the wall: 4.5 to 30 cm Wall plate: 7.2 x 29.2 cm TV plate: 22.4 x 22.4 cm
WEIGHT	1.7 kg
ACCESSORIES	Spirit level Cable clamps. Installation template Fischer plugs, screws and mounting accessories



+ Info:
<https://fonestar.com/MOV-122PR>

